



Halal Status	Halal Only
Specification	L204 OYSTER SHOULDER SHANK ON KNUCKLE TIP OFF EX NECK STRING ON
Cut From Grades	YM/PM
Market	EUROPEAN UNION
pH	All
Bone	Bone-In

**Quality Points**

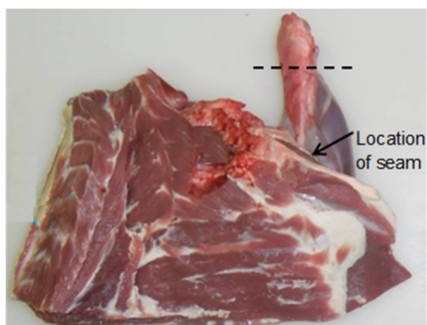
QP 1	Prepectoral gland only removed if visually present
QP 2	Knuckle tip off

Butchery Specification

Specification	OYSTER SHOULDER SHANK ON KNUCKLE TIP OFF EX NECK STRING ON
Sales Description	Prepared from a bone-in forequarter. The oyster, comprising the shank bone, arm bone and blade bone, is separated from the rib cage along the natural seam. The underlying muscle on the blade bone remains with the oyster shoulder. The knuckle tip is removed.



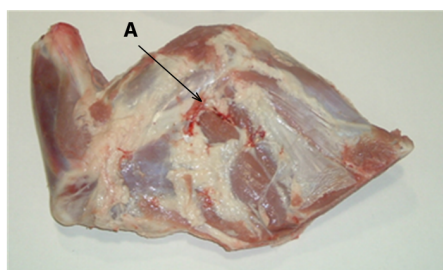
Preparation Items



- Derived from a neck string on carcass. The neck, scrag and breast are to be removed from the forequarter along the first natural seam beneath the blade bone (rib side of the blade). This will produce an untrimmed oyster cut shoulder which includes the foreshank, arm bone, shoulder blade, all muscles overlying the shoulder blade (skin side) and the first underlying muscle attached to the shoulder blade (rib side of the blade)

- The flank and point end brisket are removed from the Oyster in one piece

- The knuckle tip is to be removed from the foreshank by a transverse cut marginally below the apex of the tendon ensuring the cut is not made deep into the shank meat



- The prescapular gland and its associated fat deposits that must be removed
- The prepectoral gland (A) is only to be removed if visually present. Do not go digging
- All loose pieces, blood clots, internal and seam fat to be removed



- Final Product

Weights

Metric		Imperial	
Min	Max	Min	Max



Catch Weight

Pieces Per Pack



1



53507 - LAMB OYSTER SHOULDERS S/N KT/F

	Catch Weight (Kg)	0kg	0kg	0lb	0lb
--	-------------------	-----	-----	-----	-----

Bill of Materials

				Total Tare		0
Description		Nav Code	Design No	Qty	Tare	Total
	Shank Cap 250mu clear	N10085	I704	0		0
	V/BAG PERMEABLE 250x390 FZ M	N25947	SFLNB390	0		0
	Carton, Lamb, 6 Corner, Silver Fern Farms	N25469	34SF	1		0